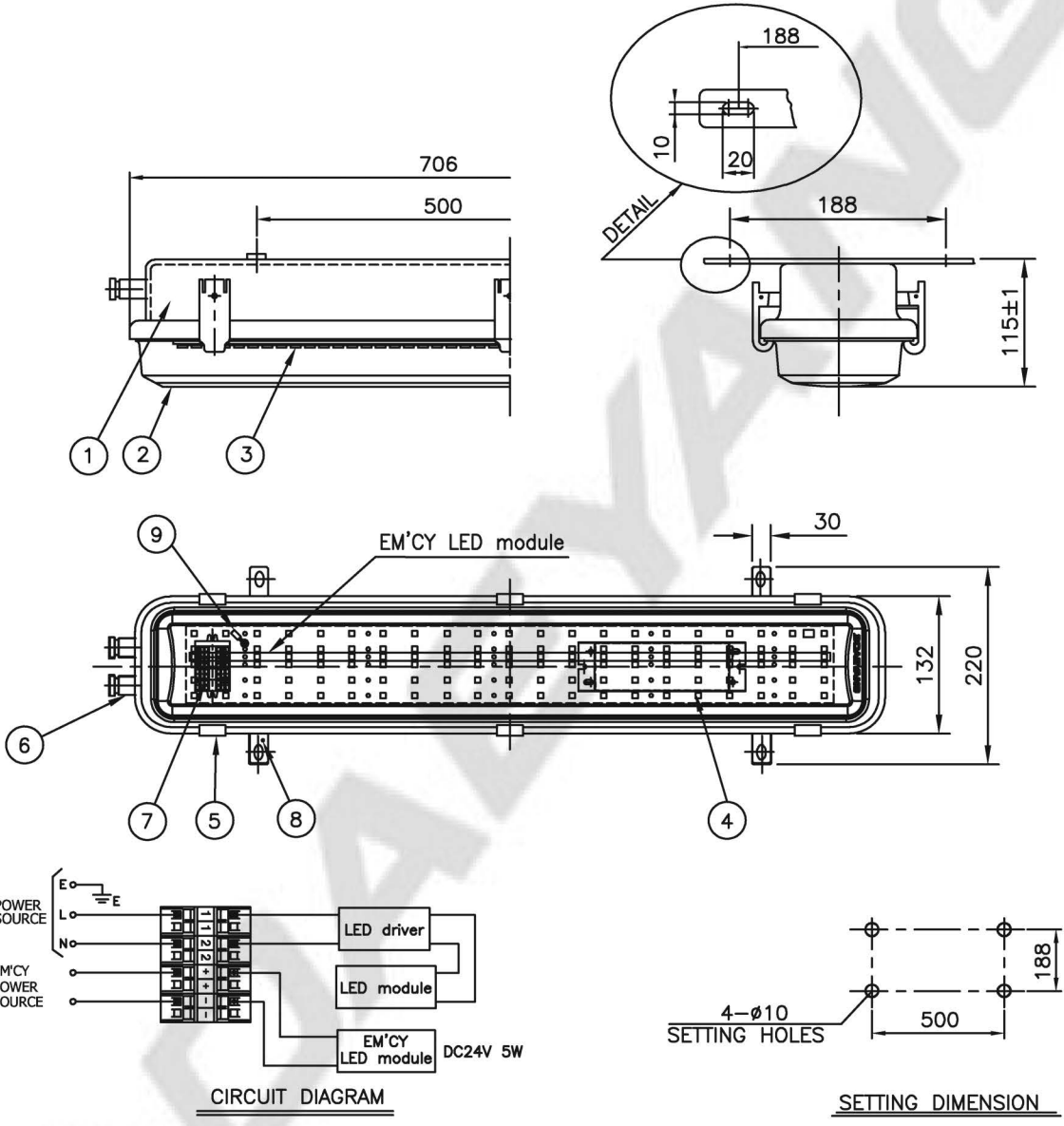


CAPACITY	SYMBOL/ SERIAL NO.	CIRCUIT DIAGRAM
AC100-240V, 50/60Hz	2S-2E	
25W / DC24V, 5W		



9	INSIDE EARTH BOLT	STAINLESS STEEL 304	1		5	LATCH	STAINLESS STEEL 316L	6	
8	OUTSIDE EARTH BOLT	STAINLESS STEEL 304	1		4	LED driver	-	1	
7	TERMINAL BLOCK	-	1	CLAMPING 4P	3	LED module	-	1	5,000K±300
6	CABLE GLAND	BRASS	2	ø14~ø17.5	2	GLOBE	POLYCARBONATE	1	MILKY
					1	BODY	STAINLESS STEEL 316L	1	
NO	NAME OF PARTS	MATERIAL	Q'TY	REMARKS	NO	NAME OF PARTS	MATERIAL	Q'TY	REMARKS

APPROVED	B. K. KIM	UNIT	MM	TITLE; LED CEILING LIGHT (SURFACE TYPE) FOR MARINE USE			
CHECKED		SCALE	N/S				
DRAWING	B. I. KIM	COLOR	N-9.3				
DATE	2015.12.04	IP	66/67				
DAEYANG				MODEL NO.	LEB125WS-1550UWNM2GLw17QC50	WEIGHT	3.3 Kg
				DWG NO.	LO1450138	SHEET NO.	17